



## The Reliance S1 AST combines space-saving design with full-featured performance

- Compact size is ideal for AST shelf-mounted applications and other special situations like marinas
- Accurately records fuel usage with a weights and measures sealable meter
- Available in an E85 compatible model for an easy transition to alternative fueling

### Specifications

**Model Number:** Prefix / G6101D / Suffix 1 Options / Suffix 2 Options  
(e.g. / G6101D / 2JK / W1)

Standard model includes the following options as standard: 1" piping [2], j-box [J], hose hanger [K], solenoid valve [//W1]. Option prefix or suffixes are noted in the options below in [ ]. A "/" (e.g. [//W1]) indicates a suffix 2 option.

**Performance:** Up to 22 GPM (83 lpm)\*.

**Compatibility:** For dispensing low viscosity petroleum fuels - diesel; biodiesel blends up to 20%; gasoline, including oxygenated blends; kerosene; AvGas<sup>^</sup>, and jet fuel<sup>^</sup>. See E85 option and approvals. Fuel must meet the applicable ASTM standard.

<sup>^</sup>Note: Confirm with fuel supplier on any fluid path metal restrictions before use. Install the proper filtration and water separation equipment necessary for aviation fueling.

**Register:** Non-computer mechanical register with power reset with interlock. Up to 999.9 gallons per delivery. Non-resettable accumulative totalizer up to 9999999.9. Optional liters measure.

**Meter:** Reliable micro-accurate 2-piston positive displacement design. Weights & Measures sealable.

**Solenoid Valve [//W1]:** 1" (2.5 cm) two-stage valve. Single stage valve with E85 option.

**Electrical:** 115VAC, 60 Hz. Optional 230VAC 50/60 Hz operation [Z].

**Inlet Connection:** 1½" (3.8 cm) NPT. Bottom access hole sized for 1½" emergency valve installation.

**Discharge:** 1" (2.5 cm) with ¾" reducing bushing.

**Mounting:** Four 7/16" (1.1 cm) mounting holes in bottom. Optional shelf-mount kit.

**Cabinet Construction:** All panels are fabricated from galvanized steel for corrosion resistance. Front door includes lock and is removable for service. Outer sides, back, and top are removable for additional service access if required.

**Cabinet Finish:** Extremely durable powder-coated finish gives outstanding appearance and toughness. Metallic silver sides, top, and back. Blue door with black register decal. Optional black, brown, green, red, silver, yellow, or white doors.

**Nozzle Boot and Hook:** Fits standard UL interchangeable nozzles. Also fits Emco Wheaton 4015 and Husky V short spout balance vapor recovery nozzles. Hook extension kits+ for OPW 11VF (p/n 892081-001) and Healy 400 (p/n 892080-001) long spout vapor recovery nozzles. Lift-to-start nozzle hook.

**Hose Hanger [K]:** Keeps hose off ground when not in use.

**Actual Dimensions:** 30.25"H x 16.75"W x 14"D  
(76.8cm H x 42.5cm W x 35.6cm D)

**Pressure:** Working pressure up to 50 psi.

**Approvals:** C-UL-US -includes diesel; biodiesel blends to B5; gasoline including ethanol blends to E10 (to E85 with E85 option - UL only); & kerosene. U.S. Weights & Measures - includes diesel; biodiesel; gasoline including oxygenated blends; kerosene; AvGas; and Jet Fuel.

### Options

**Shelf-Mount Kit+:** Carbon steel shelf brackets for mounting dispenser to tank. Black powder coat finish. P/n 891839-001.

**Pulsers:** 10:1 [7A] and 100:1 [7B] ratio options.

**E85\* [E/ prefix]:** Utilizes nickel-plating, hard anodizing, stainless steel, and special elastomers for E85 compatibility.

**Hose Mast [//J]:** Raises hose to ease hose handling. Optional hose clamp kit+ (p/n 890898-001) for Goodyear<sup>®</sup> vapor recovery hose.

**External Filter Kit+:** Installs on discharge. P/n 889921-002.

**Stainless Steel:** All exterior panels [//S], all panels except painted galvanized steel doors [//S1], or stainless steel doors only [//S2].

**Other Options:** Liter measure [8] and 230VAC 50/60 Hz operation [Z].

### Rear View Shown

VR register with power reset  
(10:1 or 100:1 pulser option)

Removable service  
panels facilitate service

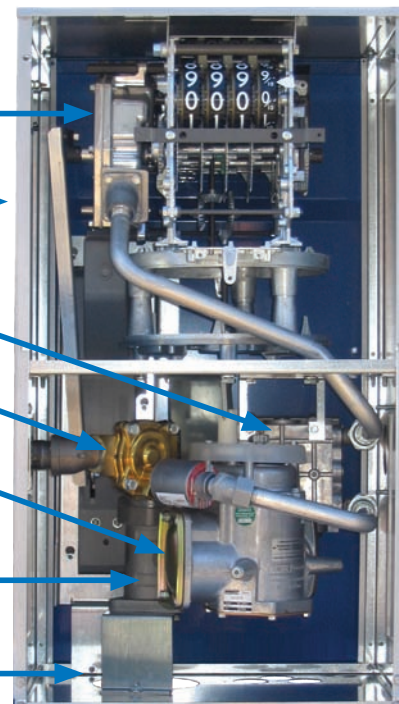
J-box for AC &  
pulser terminations

1" two-stage  
solenoid valve

Weights & Measures  
sealable 2-piston  
meter

Vertical strainer with  
1½" dispenser inlet

5" clearance hole for  
mounting 1½" shear valve



<sup>^</sup>Note: Kits require field installation.

\*Flow rates are maximum test rates at discharge. Actual rates will depend upon installation conditions, dispenser accessories and the size of the submersible or suction pump.

\*\*E/models are UL Listed for ethanol blends up to E85 as well as gasoline and diesel. Select only hose and nozzle accessories that are expressly compatible with the fuel type being dispensed.