



**CUBOGAS CNG Solution:
Proven performance. Unparalleled experience.**

Easy to install and maintain, our CUBOGAS CNG solutions are durable, economical, and environmentally friendly. Their innovative, modular technology, increase efficiency & reduce operation expenses.

CUBOGAS CNG Solutions: Proven performance. Unparalleled experience.



- Available for fast, slow or mixed refueling stations.
- Electric motors up to 600 kW satisfy any usage need.
- Handles inlet pressures ranging from 0.1 to 200 barg.
- Features can include soundproof canopy and integrated measuring system.

When choosing a CNG system, experience matters. After all, you need proven technology and reliable performance something that cannot be developed overnight.

We've been building CNG compressors for automotive use for over 75 years, so you will not find anyone with more experience in the industry. Based on that experience, we engineered our popular CUBOGAS products to satisfy any Customer needs.

Easy to install and maintain, our CUBOGAS CNG solutions are durable, economical and environmentally friendly. Their innovative, modular technology increases efficiency and reduces operating costs.

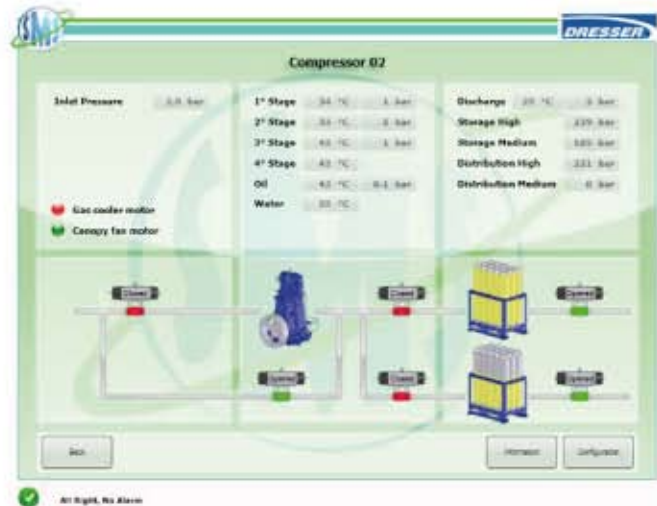
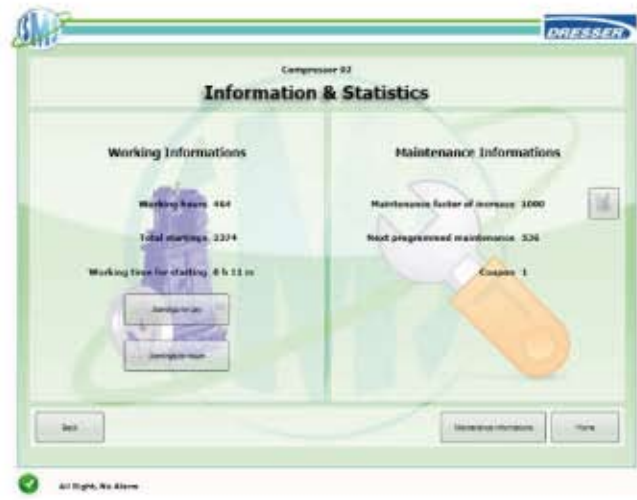
Multiple models offer maximum flexibility

CuboGas units are available in a variety of models operating in a wide range of inlet pressures (0.1 to 200 barg), driven by electric motors or gas engines up to 600 kW rated power. You can select the version best suiting for your site, space and usage requirements.

Optional features* include a soundproof canopy, touch screen control panel, integrated measuring system and air compressor, extra cooling system and storage unit.

-
- Vertical Heavy duty reciprocating compressor designed based on API 618 standards.
 - Conservative rotational speed.
 - Designed to operate on 24/7 basis — no matter the ambient conditions.
 - Non-lubricated cylinders reduces costs and contamination risks both for storage and vehicle tanks.
-
- Meets all international safety requirements.
 - Each unit is load tested prior to delivery.

Remote control and diagnostic system



- Monitoring in real time site working conditions.
- Ideal for preventive maintenance
- Remote diagnostic tools
- Cost reduction effective

Proven technology improves performance and cuts costs

We utilize industry-leading technology in our CNG solutions in order to reduce your maintenance costs and related expenses. The heart of our CUBOGAS units is our highly efficient, heavy duty reciprocating compressor. Designed on API 618 standards, it features a conservative rotational speed to ensure safer, smoother and more reliable operation.

Safety first

Since safety is key for Dresser Wayne, all our units fulfill the most stringent international safety standards and each unit is 100% load tested before delivery. The compact design, low noise level and vibration-free operation make CUBOGAS units particularly attractive for urban sites.

All of our CUBOGAS units also comply with applicable environmental regulations.

CUBOGAS CNG Solutions: Proven performance. Unparalleled experience.

About Dresser Wayne

With offices on five continents, manufacturing facilities on four, and thousands of employees worldwide, Dresser Wayne has shaped the retail and fleet fueling industry ever since its modest beginnings in 1891. Known for combining cutting-edge technology with exceptional customer focus and win-win industry partnerships, Dresser Wayne has become the leading supplier of integrated solutions to its customers in the retail and fleet petroleum industry. Dresser Wayne—headquartered in Austin, Texas—is largely responsible for the innovations that contribute to the look and functionality of the modern service station. From dispensers and POS systems to retail intelligence and after-sale support services, Dresser Wayne is committed to continuing its long tradition of providing innovative, customer-centric solutions in all facets of the industry.

Dresser Wayne is a business segment of Dresser, Inc.

Genuine Parts

Protect your warranty and regulatory certifications. Insist on Dresser Wayne Genuine Parts for all equipment repairs and upgrades.

Worldwide Headquarters:

Austin, Texas, U.S.A.
T. +01 512 388 8311

European Headquarters:

Malmö, Sweden
T. +46 40 360 500

Rio de Janeiro, Brazil

T. +55 21 2598 7711

Shanghai, China

T. +21 5899 3976

About Dresser, Inc.

Dresser, Inc. is a leader in providing highly engineered infrastructure products for the global energy industry. The company has leading positions in a broad portfolio of products including valves, actuators, meters, switches, regulators, piping products, natural gas-fueled engines, retail fuel dispensers and associated retail point of sale systems and air and gas handling equipment. Leading brand names within the Dresser portfolio include Dresser Wayne retail fueling systems, Waukesha natural gas-fired engines, Masoneilan control valves, Mooney regulators, Consolidated pressure relief valves, and Roots blowers and rotary gas meters. It has manufacturing and customer service facilities located strategically worldwide and a sales presence in more than 100 countries. The company's website can be accessed at www.dresser.com.

Commercial Office & Headquarters:

Via Giovanni Plantanida, 12
50127 Florence (Italy)
Tel. +39 055 3039 200
Fax. +39 0298848111

Production Plant:

Via Roma, 32
23018 Talamona-Sondrio (Italy)
Tel. +39 0342 608211
Fax. +39 0298848111